

# Technical Analysis Report

KSE 100 Index			
Support		Resistance	
S1	112,320.90	R1	118,600.04
S2	111,250.40	R2	117,891.04
S3	110,000.01	R3	117,623.03

Indicator	Reading
14 – Day RSI	55
Stochastic Oscillator	28

Moving AVG	Reading
20 – DMA	113,292.40
50 – DMA	107,144.67
100 – DMA	98,685.83
200 – DMA	87,870.11

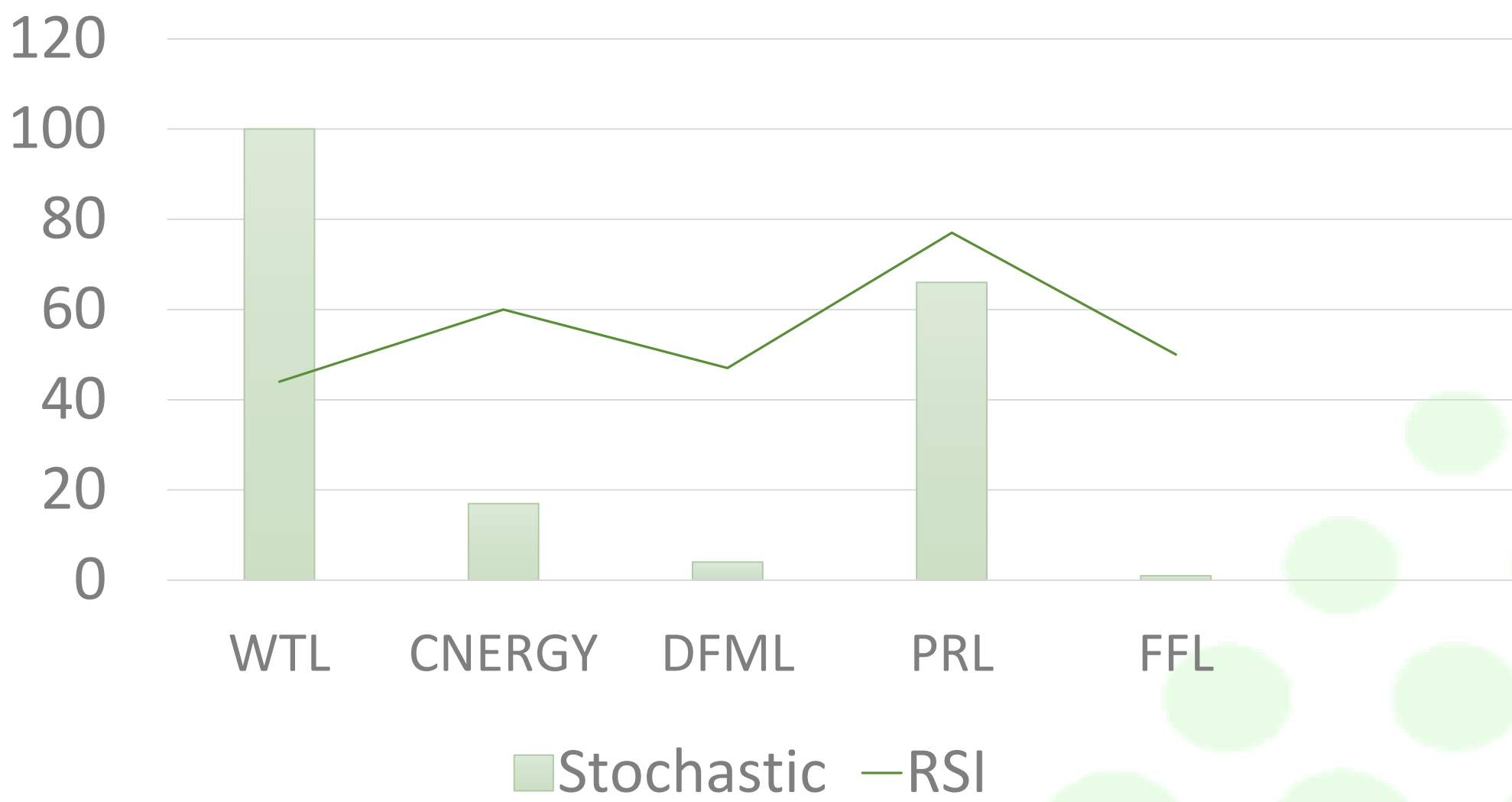
Market at a Glance			
Open	114,800.98	Close	113,836.74
High	114,884.63	Change	(-0.58%)
Low	113,630.45	Volume	176,924,174



## Strategy:

**KSE-100 INDEX** : Selling continues, KSE-100 sheds over 650 points The market opened on a positive note, with the benchmark index hitting an intra-day high of 114,884.63. However, selling pressure soon returned, dragging the KSE-100 to an intra-day low of 113,630.45. At close, the benchmark index settled at 113,836.74, a decrease of 658.96 points or 0.58%. Across-the-board selling was observed in key sectors including automobile assemblers, commercial banks, fertilizer, oil and gas exploration companies, OMCs and refinery. Index-heavy stocks including PRL, PSO, SSGC, SNGPL, OGDC, PPL, ENGRO, MEBL and UBL ended in the red. Market experts noted that investors are keeping a close eye on the local political situation.

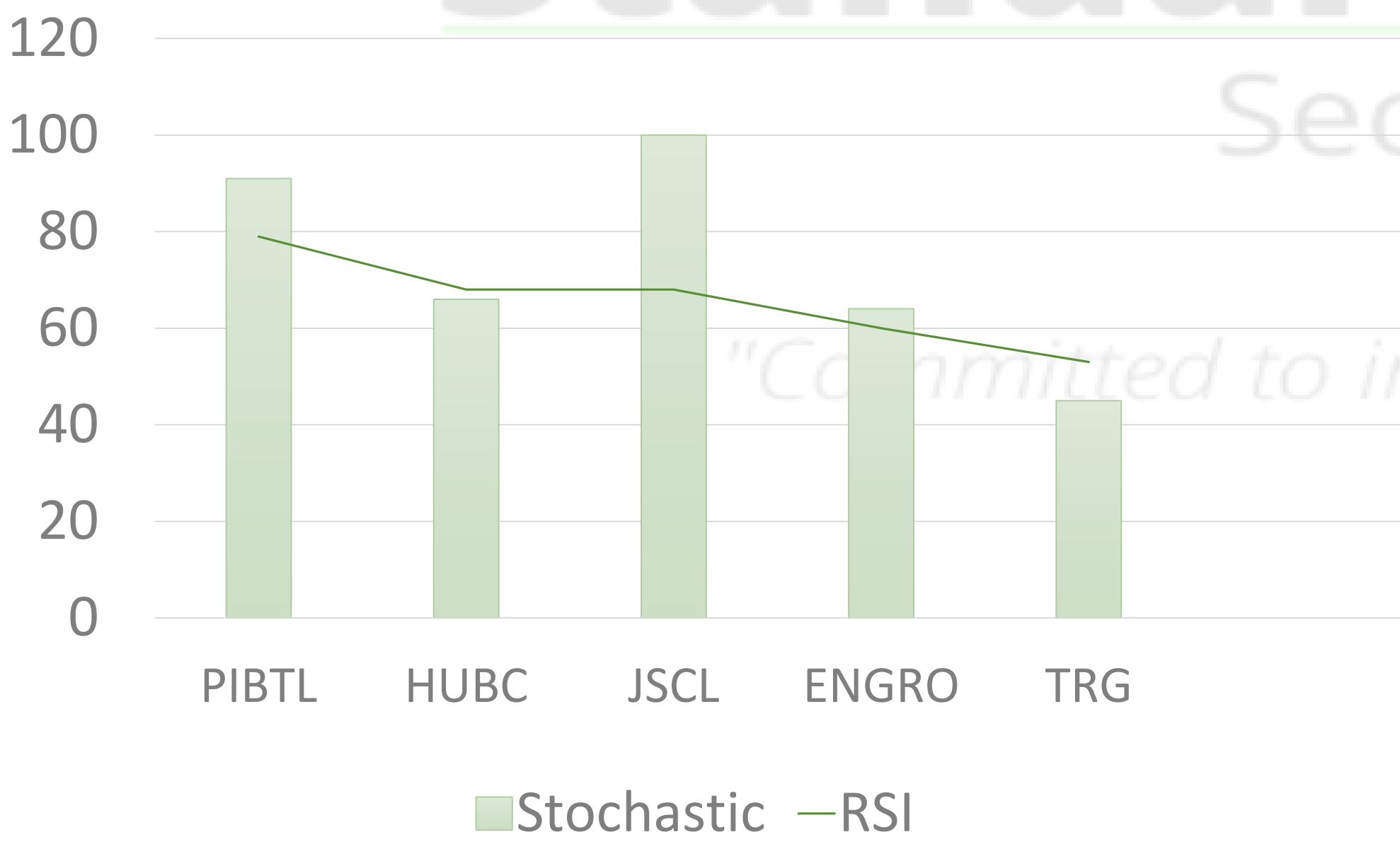
RSI and Stochastic Indicators



Volume Leaders

Symbol	Close	Change	Volume
WTL	1.88	(4.44%)	102,675,600
CENERGY	6.79	(-3.82%)	36,839,797
DFML	45.74	(10.01%)	19,319,666
PRL	41.92	(-3.61%)	17,599,390
FFL	16.95	(-0.88%)	16,090,972
PIBTL	8.63	(2.49%)	12,655,900
HUBC	131.8	(0.47%)	11,051,715
JSCL	21.47	(9.99%)	10,833,391
ENGROH	217.7	(2.99%)	10,815,587
TRG	68.3	(-0.70%)	9,859,055

RSI and Stochastic Indicators



Standard Capital Securities | Technical Desk

UAN: 021-111-111-721

[info@scstrade.com](mailto:info@scstrade.com)

WWW.SCSTRADE.COM



### Most Active in Market

SYMBOL	COMPANY NAME	CLOSE	MACD DAILY	MACD WEEKLY	RSI DAILY	SUP 1	SUP 2	RES 1	RES 2	SMA 60	SMA 200	52 WK HIGH	52 WK LOW
<a href="#">ATRL</a>	Attock Refinery Ltd. ...	655.90	Sell	Sell	53.31	642.27	628.63	678.27	700.63	567.55	423.74	775.75	285.11
<a href="#">DGKC</a>	D. G. Khan Cement Co...	102.03	Sell	Sell	53.43	100.56	99.10	104.44	106.86	93.60	85.01	112.39	61.80
<a href="#">LUCK</a>	Lucky Cement Ltd. Con...	1,110.64	Sell	Sell	49.19	1,096.76	1,082.88	1,126.76	1,142.88	1,062.17	925.71	1,283.84	693.80
<a href="#">NRL</a>	National Refinery Ltd. ...	289.32	Sell	Sell	52.87	283.47	277.61	296.96	304.59	258.87	255.77	341.50	198.00
<a href="#">OGDC</a>	Oil & Gas Development...	221.77	Sell	Sell	54.81	218.70	215.64	225.53	229.30	201.62	156.17	255.40	104.50
<a href="#">POL</a>	Pakistan Oilfields Ltd. ...	629.80	Sell	Sell	53.37	624.54	619.27	634.03	638.25	602.05	552.13	699.00	403.00
<a href="#">PPL</a>	Pakistan Petroleum Ltd.	190.86	Sell	Sell	52.55	188.64	186.42	194.04	197.22	171.03	132.90	216.50	94.00
<a href="#">PSO</a>	Pakistan State Oil Com...	400.83	Sell	Sell	56.47	395.91	390.98	407.88	414.92	318.34	215.42	465.00	137.00
<a href="#">SNGP</a>	Sui Northern Gas Pipeli...	99.94	Sell	Sell	49.04	98.45	96.97	102.21	104.49	92.69	74.62	115.75	57.53
<a href="#">SSGC</a>	Sui Southern Gas Com...	42.74	Sell	Sell	54.49	41.98	41.22	44.07	45.40	31.24	16.07	50.87	8.31
<a href="#">TRG</a>	TRG Pakistan Ltd.	68.78	Sell	Sell	57.74	66.56	64.34	71.45	74.12	59.35	58.93	83.15	44.03

# Today's AI Generated Signal

**ASTL - Amreli Steels Ltd.**

**Signal: Sell**

**Signal Rate: 24.41**

**Next Signal: Buy When Price Closes Above 25.4**

**ATRL - Attock Refinery Ltd.**

**Signal: Sell**

**Signal Rate: 648.38**

**Next Signal: Buy When Price Closes Above 666**

**FEROZ - Ferozsons Laboratories Ltd.**

**Signal: Sell**

**Signal Rate: 321.68**

**Next Signal: Buy When Price Closes Above 333.49**

**INIL - International Industries Ltd. Consolidated**

**Signal: Sell**

**Signal Rate: 170.92**

**Next Signal: Buy When Price Closes Above 175.79**

**ISL - International Steels Ltd.**

**Signal: Sell**

**Signal Rate: 94.96**

**Next Signal: Buy When Price Closes Above 98.9**

**MLCF - Maple Leaf Cement Factory Ltd. Consolidated**

**Signal: Sell**

**Signal Rate: 43.33**

**Next Signal: Buy When Price Closes Above 44.54**

**MUGHAL - Mughal Iron & Steels Ind. Ltd.**

**Signal: Sell**

**Signal Rate: 80.09**

**Next Signal: Buy When Price Closes Above 82.49**

**NRL - National Refinery Ltd.**

**Signal: Sell**

**Signal Rate: 281.03**

**Next Signal: Buy When Price Closes Above 294**

**PSO - Pakistan State Oil Company Ltd. Consolidated**

**Signal: Sell**

**Signal Rate: 389.02**

**Next Signal: Buy When Price Closes Above 400**

**SEARL - The Searl Company Ltd. Consolidated**

**Signal: Sell**

**Signal Rate: 100.3**

**Next Signal: Buy When Price Closes Above 104.2**

**SHEL - Shell Pakistan Ltd.**

**Signal: Sell**

**Signal Rate: 203.03**

**Next Signal: Buy When Price Closes Above 209.69**

**SNGP - Sui Northern Gas Pipelines Ltd.**

**Signal: Sell**

**Signal Rate: 98.2**

**Next Signal: Buy When Price Closes Above 101**



# AI Generated Open Positions (All)

## AGP - AGP Ltd.

**Current Signal State: Buy**

**Signal Initiated At: 173.49**

**Signal Initiated On: 13-Jan-25**

**Current Rate: 182.49**

**Profit / Loss: 5.19%**

**Next Signal: (Stop Loss) / Sell When Price Closes Below 172.06**

## AIRLINK - Air Link Communication Ltd

**Current Signal State: Buy**

**Signal Initiated At: 205.81**

**Signal Initiated On: 15-Jan-25**

**Current Rate: 200.94**

**Profit / Loss: -2.37%**

**Next Signal: (Stop Loss) / Sell When Price Closes Below 200.52**

## ASTL - Amreli Steels Ltd.

**Current Signal State: Buy**

**Signal Initiated At: 25.82**

**Signal Initiated On: 14-Jan-25**

**Current Rate: 24.21**

**Profit / Loss: -6.24%**

**Next Signal: (Stop Loss) / Sell When Price Closes Below 25.1**

## ATRL - Attock Refinery Ltd.

**Current Signal State: Buy**

**Signal Initiated At: 619.09**

**Signal Initiated On: 13-Jan-25**

**Current Rate: 646.99**

**Profit / Loss: 4.51%**

**Next Signal: (Stop Loss) / Sell When Price Closes Below 651**

## BAHL - Bank AL-Habib Ltd.

**Current Signal State: Buy**

**Signal Initiated At: 133.86**

**Signal Initiated On: 10-Jan-25**

**Current Rate: 134**

**Profit / Loss: 0.10%**

**Next Signal: (Stop Loss) / Sell When Price Closes Below 128.59**

## CHCC - Cherat Cement Company Ltd.

**Current Signal State: Sell**

**Signal Initiated At: 256.87**

**Signal Initiated On: 15-Jan-25**

**Current Rate: 257.49**

**Next Signal: Buy When Price Closes Above 265.05**

## DGKC - D. G. Khan Cement Company Ltd.

**Current Signal State: Buy**

**Signal Initiated At: 99.75**

**Signal Initiated On: 10-Jan-25**

**Current Rate: 102.3**

**Profit / Loss: 2.56%**

**Next Signal: (Stop Loss) / Sell When Price Closes Below 101.51**

## EFERT - Engro Fertilizers Ltd.

**Current Signal State: Buy**

**Signal Initiated At: 220.19**

**Signal Initiated On: 13-Jan-25**

**Current Rate: 218.8**

**Profit / Loss: -0.63%**

**Next Signal: (Stop Loss) / Sell When Price Closes Below 217.03**

## ENGRO - Engro Corporation Ltd. Consolidated

**Current Signal State: Buy**

**Signal Initiated At: 435.67**

**Signal Initiated On: 23-Dec-24**

**Current Rate: 0**

**Profit / Loss: -100.00%**

**Next Signal: (Stop Loss) / Sell When Price Closes Below 474.01**

## FEROZ - Ferozsons Laboratories Ltd.

**Current Signal State: Buy**

**Signal Initiated At: 330.34**

**Signal Initiated On: 15-Jan-25**

**Current Rate: 324**

**Profit / Loss: -1.92%**

**Next Signal: (Stop Loss) / Sell When Price Closes Below 326.6**

**FFC - Fauji Fertilizer Company Ltd. Consolidated**

**Current Signal State: Sell**

**Signal Initiated At: 398.63**

**Signal Initiated On: 17-Dec-24**

**Current Rate: 385**

**Next Signal: Buy When Price Closes Above 403**

**GHNI - Ghandhara Industries Ltd.**

**Current Signal State: Sell**

**Signal Initiated At: 579.98**

**Signal Initiated On: 15-Jan-25**

**Current Rate: 571.98**

**Next Signal: Buy When Price Closes Above 599**

**GLAXO - Glaxosmithkline (Pak) Ltd.**

**Current Signal State: Buy**

**Signal Initiated At: 387.95**

**Signal Initiated On: 14-Jan-25**

**Current Rate: 401**

**Profit / Loss: 3.36%**

**Next Signal: (Stop Loss) / Sell When Price Closes Below 382.4**

**HBL - Habib Bank Ltd.**

**Current Signal State: Sell**

**Signal Initiated At: 173.05**

**Signal Initiated On: 08-Jan-25**

**Current Rate: 172.26**

**Next Signal: Buy When Price Closes Above 176**

**HCAR - Honda Atlas Cars (Pakistan) Ltd.**

**Current Signal State: Sell**

**Signal Initiated At: 306.63**

**Signal Initiated On: 15-Jan-25**

**Current Rate: 301.5**

**Next Signal: Buy When Price Closes Above 316.49**

**INIL - International Industries Ltd. Consolidated**

**Current Signal State: Buy**

**Signal Initiated At: 175.02**

**Signal Initiated On: 15-Jan-25**

**Current Rate: 171**

**Profit / Loss: -2.30%**

**Next Signal: (Stop Loss) / Sell When Price Closes Below 173.5**

**ISL - International Steels Ltd.**

**Current Signal State: Buy**

**Signal Initiated At: 97.97**

**Signal Initiated On: 14-Jan-25**

**Current Rate: 95.24**

**Profit / Loss: -2.79%**

**Next Signal: (Stop Loss) / Sell When Price Closes Below 97.25**

**LUCK - Lucky Cement Ltd. Consolidated**

**Current Signal State: Sell**

**Signal Initiated At: 1147.69**

**Signal Initiated On: 03-Jan-25**

**Current Rate: 1099.2**

**Next Signal: Buy When Price Closes Above 1124.7**



**MCB - MCB Bank Ltd.**

**Current Signal State: Buy**

**Signal Initiated At: 287.32**

**Signal Initiated On: 30-Dec-24**

**Current Rate: 282**

**Profit / Loss: -1.85%**

**Next Signal: (Stop Loss) / Sell When Price Closes Below 280.05**

**MEBL - Meezan Bank Ltd.**

**Current Signal State: Buy**

**Signal Initiated At: 236.59**

**Signal Initiated On: 13-Jan-25**

**Current Rate: 236**

**Profit / Loss: -0.25%**

**Next Signal: (Stop Loss) / Sell When Price Closes Below 233.91**

**MLCF - Maple Leaf Cement Factory Ltd. Consolidated**

**Current Signal State: Buy**

**Signal Initiated At: 44.15**

**Signal Initiated On: 13-Jan-25**

**Current Rate: 43.4**

**Profit / Loss: -1.70%**

**Next Signal: (Stop Loss) / Sell When Price Closes Below 44**

**MUGHAL - Mughal Iron & Steels Ind. Ltd.**

**Current Signal State: Buy**

**Signal Initiated At: 79.39**

**Signal Initiated On: 13-Jan-25**

**Current Rate: 80.4**

**Profit / Loss: 1.27%**

**Next Signal: (Stop Loss) / Sell When Price Closes Below 81.32**

**NCL - Nishat Chunian Ltd.**

**Current Signal State: Sell**

**Signal Initiated At: 32.79**

**Signal Initiated On: 09-Jan-25**

**Current Rate: 33.82**

**Next Signal: Buy When Price Closes Above 35**

**NETSOL - Netsol Technology Ltd.**

**Current Signal State: Buy**

**Signal Initiated At: 158.19**

**Signal Initiated On: 14-Jan-25**

**Current Rate: 167**

**Profit / Loss: 5.57%**

**Next Signal: (Stop Loss) / Sell When Price Closes Below 151**

**NML - Nishat Mills Ltd. Consolidated**

**Current Signal State: Sell**

**Signal Initiated At: 104.56**

**Signal Initiated On: 08-Jan-25**

**Current Rate: 99.99**

**Next Signal: Buy When Price Closes Above 102.5**

**NRL - National Refinery Ltd.**

**Current Signal State: Buy**

**Signal Initiated At: 283.62**

**Signal Initiated On: 14-Jan-25**

**Current Rate: 281.59**

**Profit / Loss: -0.72%**

**Next Signal: (Stop Loss) / Sell When Price Closes Below 285.25**

**OCTOPUS - Octopus Digital Limited**

**Current Signal State: Buy**

**Signal Initiated At: 70.01**

**Signal Initiated On: 14-Jan-25**

**Current Rate: 68**

**Profit / Loss: -2.87%**

**Next Signal: (Stop Loss) / Sell When Price Closes Below 65.81**

**OGDC - Oil & Gas Development Company Ltd.**

**Current Signal State: Buy**

**Signal Initiated At: 224.96**

**Signal Initiated On: 10-Jan-25**

**Current Rate: 218.07**

**Profit / Loss: -3.06%**

**Next Signal: (Stop Loss) / Sell When Price Closes Below 209.09**

**PIOC - Pioneer Cement Ltd.**

**Current Signal State: Sell**

**Signal Initiated At: 198.82**

**Signal Initiated On: 03-Jan-25**

**Current Rate: 190**

**Next Signal: Buy When Price Closes Above 195.2**

**POL - Pakistan Oilfields Ltd.**

**Current Signal State: Sell**

**Signal Initiated At: 623.42**

**Signal Initiated On: 19-Dec-24**

**Current Rate: 627.89**

**Next Signal: Buy When Price Closes Above 663**

**PPL - Pakistan Petroleum Ltd.**

**Current Signal State: Sell**

**Signal Initiated At: 190.86**

**Signal Initiated On: 15-Jan-25**

**Current Rate: 186.5**

**Next Signal: Buy When Price Closes Above 195**

**PRL - Pakistan Refinery Ltd.**

**Current Signal State: Buy**

**Signal Initiated At: 38.76**

**Signal Initiated On: 13-Jan-25**

**Current Rate: 41.95**

**Profit / Loss: 8.23%**

**Next Signal: (Stop Loss) / Sell When Price Closes Below 41.3**

**PSMC - Pak Suzuki Motor Company Ltd.**

**Current Signal State: Sell**

**Signal Initiated At: 662.77**

**Signal Initiated On: 17-Jan-24**

**Current Rate: 0**

**Next Signal: Buy When Price Closes Above 613**

**PSO - Pakistan State Oil Company Ltd. Consolidated**

**Current Signal State: Buy**

**Signal Initiated At: 393.42**

**Signal Initiated On: 13-Jan-25**

**Current Rate: 388.21**

**Profit / Loss: -1.32%**

**Next Signal: (Stop Loss) / Sell When Price Closes Below 398.03**

**SAZEW - Sazgar Engineering Works Ltd.**

**Current Signal State: Buy**

**Signal Initiated At: 1061.39**

**Signal Initiated On: 06-Dec-24**

**Current Rate: 1080.44**

**Profit / Loss: 1.79%**

**Next Signal: (Stop Loss) / Sell When Price Closes Below 1050**



**SEARL - The Searl Company Ltd. Consolidated**

**Current Signal State: Buy**

**Signal Initiated At: 99.87**

**Signal Initiated On: 13-Jan-25**

**Current Rate: 100**

**Profit / Loss: 0.13%**

**Next Signal: (Stop Loss) / Sell When Price Closes Below 101.5**

**SHEL - Shell Pakistan Ltd.**

**Current Signal State: Buy**

**Signal Initiated At: 210.52**

**Signal Initiated On: 14-Jan-25**

**Current Rate: 202.5**

**Profit / Loss: -3.81%**

**Next Signal: (Stop Loss) / Sell When Price Closes Below 208**

**SNGP - Sui Northern Gas Pipelines Ltd.**

**Current Signal State: Buy**

**Signal Initiated At: 100.99**

**Signal Initiated On: 13-Jan-25**

**Current Rate: 98**

**Profit / Loss: -2.96%**

**Next Signal: (Stop Loss) / Sell When Price Closes Below 99.5**

**SSGC - Sui Southern Gas Company Ltd.**

**Current Signal State: Sell**

**Signal Initiated At: 42.74**

**Signal Initiated On: 15-Jan-25**

**Current Rate: 42.1**

**Next Signal: Buy When Price Closes Above 44.64**

**SYS - Systems Ltd.**

**Current Signal State: Buy**

**Signal Initiated At: 575.48**

**Signal Initiated On: 14-Jan-25**

**Current Rate: 561**

**Profit / Loss: -2.52%**

**Next Signal: (Stop Loss) / Sell When Price Closes Below 556**

**TRG - TRG Pakistan Ltd.**

**Current Signal State: Buy**

**Signal Initiated At: 66.19**

**Signal Initiated On: 14-Jan-25**

**Current Rate: 68.3**

**Profit / Loss: 3.19%**

**Next Signal: (Stop Loss) / Sell When Price Closes Below 67.01**

**UBL - United Bank Ltd.**

**Current Signal State: Buy**

**Signal Initiated At: 375.92**

**Signal Initiated On: 13-Jan-25**

**Current Rate: 384.5**

**Profit / Loss: 2.28%**

**Next Signal: (Stop Loss) / Sell When Price Closes Below 373.01**

**Standard Capital**  
Securities (PVT) LTD

*"Committed to intelligent investing"*

# Glossary of Terms

**Support:** Support is the level at which the stock is likely to see increased interest from buyers. The buying support will prevent the stock from falling further.

**Resistance:** Resistance is the level at which the stock is likely to see increased interest from sellers. The selling pressure will prevent the stock from rising further.

**RSI:** The Relative Strength Index (RSI) is a momentum oscillator that ranges from 0 to 100. It compares the extent of the stock's recent price movements by evaluating recent gains and losses. Stocks with RSI above 70 could be considered overbought, and below 30 could be considered oversold. Generally, if the RSI falls below 70, it is a bearish signal. Conversely, if the RSI of a stock rises above 30 it is considered bullish. The RSI used is of 14 days.

**Bollinger Bands:** A Bollinger Band, developed by famous technical trader John Bollinger, is plotted two standard deviations away from a simple moving average. BB is a highly popular technical analysis technique. Many traders believe the closer the prices move to the upper band, the more overbought the market, and the closer the prices move to the lower band, the more oversold the market.

**MACD:** MACD shows the relationship between a longer period moving average and a short period Moving average of a stock's price. Generally, the 26-day exponential moving average (EMA) and the 12-day EMA are used to calculate MACD.

**EMA:** Exponential moving average (EMA) is the weighted average of the prices of a given security where higher weights are given to recent data points. EMA is used to analyze the trend of a stock.

**SMA:** A simple moving average (SMA) is the average of the closing price of a security for a given period. The parabolic SAR: is a technical indicator used to determine the price direction of an asset, as well as draw attention to when the price direction is changing. Sometimes known as the "stop and reversal system," the parabolic SAR was developed by J. Welles Wilder Jr., creator of the relative strength index (RSI).

## Disclaimer Section

This document has been prepared by technical analysts at Standard Capital Securities (SCS). This document does not constitute an offer or solicitation for the purchase or sale of any security. This publication is intended only for distribution to the clients of the Company who are assumed to be reasonably sophisticated investors that understand the risks involved in investing in equity securities. The information contained herein is based upon publicly available data and sources believed to be reliable. While every care was taken to ensure accuracy and objectivity, SCS does not represent that it is accurate or complete and it should not be relied on as such. In particular, the report takes no account of the investment objectives, financial situation and particular needs of investors. The information given in this document is as of the date of this report and there can be no assurance that future results or events will be consistent with this information. This information is subject to change without any prior notice. SCS reserves the right to make modifications and alterations to this statement as may be required from time to time. However, SCS is under no obligation to update or keep the information current. SCS is committed to providing independent and transparent recommendation to its client and would be happy to provide any information in response to specific client queries. Past performance is not necessarily a guide to future performance. This document is provided for assistance only and is not intended to be and must not alone be taken as the basis for any investment decision. The user assumes the entire risk of any use made of this information. Each recipient of this document should make such investigation as it deems necessary to arrive at an independent evaluation of an investment in the securities of companies referred to in this document (including the merits and risks involved), and should consult his or her own advisors to determine the merits and risks of such investment. SCS or any of its affiliates shall not be in any way responsible for any loss or damage that may be arise to any person from any inadvertent error in the information contained in this report.